

**ARCHITECTURAL**<sup>TM</sup>

ENDURING  
**ARCH**ITECTURE  
FINDS ITS  
INSPIRATION  
IN ENDURING  
ARCHITECTURAL  
INNOVATION

A black and white photograph of a man with curly hair and glasses, wearing a light-colored zip-up jacket over a dark shirt. He is holding a mobile phone to his ear with his right hand and a stack of architectural plans under his left arm. He is looking out of a large window, with bright light coming from outside. The background is a dark, textured wall.

# ARCHITECTURAL™

---

**The ARChitectural™ range of commercial pre-finished products offers outstanding durability and supports the creation of enduring architecture.**

---

The range features ChromaShield™ technology, the combination of a series of advanced and durable coatings with James Hardie cement-composite substrates that also have durability as its core DNA.

ChromaShield™ technology brings together these two durable elements to create products that offer a 'double shield' of durability from the surface level coating to the core.

---

## ChromaShield™ Technology

---

ChromaShield™ technology is expressed through a series of advanced and durable coatings combined with James Hardie cement-composite substrates that also have durability as its core DNA.

ChromaShield™ technology brings together these two durable elements to create products that offer a 'double shield' of durability, from the surface level coating to the core.

Each ChromaShield™ series coating has been formulated with the end product in mind, to further enhance its look, finish and durability.

ChromaShield™ technology attributes\* include:

- Resistance to general stains
- Resistance to yellowing and fading.
- Resistance to cracking, peeling and flaking.
- Resistance to bacteria and mould.
- Resistance to abrasion, wear and light surface scratching.
- Low maintenance and easy-to-clean.
- Is made from products that contain no VOC's (volatile organic compounds).

---

## ChromaShield™ 100 Series Coating

---

A commercial-grade, clear coating for interior dry wall applications.

ChromaShield™ 100 series coating has been formulated to enable a 'natural concrete' aesthetic of a cement-composite panel.

Inraw™ panel offers a 'double shield' of durability in a vast range of commercial and residential interior dry wall applications.

---

## ChromaShield™ 200 Series Coating

---

A commercial-grade, coloured coating for interior wall applications in both wet and dry areas.

ChromaShield™ 200 series coating has been formulated for a lustrous look and finish.

Invibe™ panel offers a 'double shield' of durability in a vast range of commercial and residential interior wall applications in both wet and dry areas.

- In addition to the ChromaShield™ technology attribute the 200 Series coating is resistant to damage from moisture and steam.\*

Most Invibe™ panels are available ex-stock. For large quantities a lead time may apply.

Each ChromaShield™  
series coating has  
been specified with  
the end product  
in mind.

\* Key attributes apply when the product is installed and maintained correctly and to the extent set out in James Hardie's published literature current at the time of installation. For more information about performance, installation, warranties and warnings go to [www.jameshardie.co.nz](http://www.jameshardie.co.nz)

# Invibe™ panel

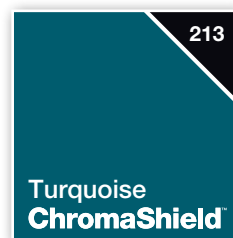
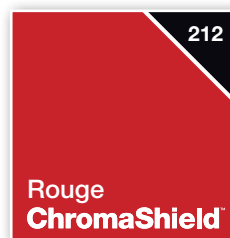
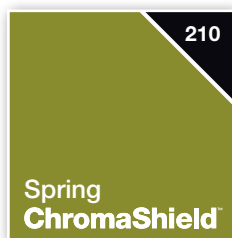
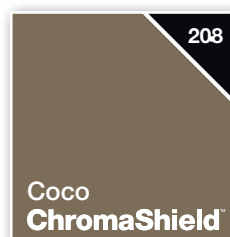
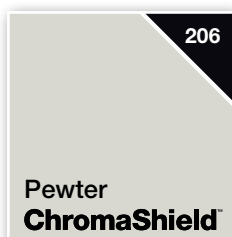
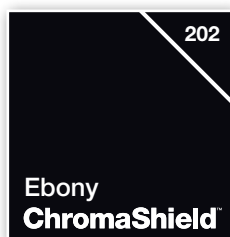
# Inraw™ panel

## Inraw™ panel interior colour palette\* 100 Series coating



*The slight variances in shade, tone and pattern is an inherent characteristic of Inraw™ panel, with each panel having its own unique characteristics.*

## Invibe™ panel interior colour palette\* 200 Series coating



\* The colours represented in all imagery have been reproduced as a guide only. For complete satisfaction, please refer to physical product samples for the exact colour and finish.

invibe<sup>™</sup>  
panel

209

Flannel  
**ChromaShield**<sup>™</sup>

207

Greige  
**ChromaShield**<sup>™</sup>

204

Stone  
**ChromaShield**<sup>™</sup>



invibe<sup>™</sup>  
panel

208

Coco  
**ChromaShield<sup>™</sup>**

209

Flannel  
**ChromaShield<sup>™</sup>**



# invibe<sup>™</sup> panel

213

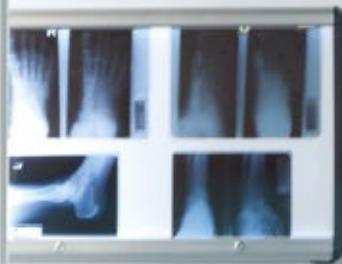
Turquoise  
**ChromaShield<sup>™</sup>**

207

Greige  
**ChromaShield<sup>™</sup>**

201

Blanc  
**ChromaShield<sup>™</sup>**



# invibe<sup>™</sup> panel

210

Spring  
**ChromaShield<sup>™</sup>**

211

Russet  
**ChromaShield<sup>™</sup>**

212

Rouge  
**ChromaShield<sup>™</sup>**





---

# ARChitectural™ Invibe™ Panel

## Featuring ChromaShield™ Technology 200 Series Coating

---

ARChitectural™ Invibe™ panel is an internal pre-finished panel characterised by a lustrous coloured look.

Invibe™ panel's core DNA is durability, because it's made from James Hardie 6mm thick cement-composite substrate that's coated using ChromaShield™ 200 series.

Invibe™ panel offers a 'double shield' of durability in a vast range of commercial and residential interior wall applications in both wet and dry areas.

<b>Sheet size</b>	2700 x 1200mm
<b>Thickness</b>	6mm
<b>Finish</b>	Gloss or Satin
<b>Application</b>	Commercial and residential interior wall in both wet and dry areas.

---

## Key Benefits\*

---

### A lustrous, coloured look in a satin or gloss finish

A carefully selected colour range that delivers an 'on trend' palette to suit a variety of different aesthetics. Gloss and satin finishes used together extend design opportunities to create a multitude of wall patterns.

### Design integrity

Design integrity is maintained over time due to a high level of performance. It's resistant to fading, yellowing, peeling and flaking. It also provides good resistance to abrasion, wear and light surface scratching.

### Low maintenance

Low maintenance and easy to clean. Resistant to general stains, bacteria and mould.

### Dimensional stability

It's resistant to rotting, cracking, warping and swelling due to the robust nature of the James Hardie cement-composite substrate.

### Fire resistance

Made from a non-combustible substrate and achieves the best possible fire hazard properties classification of 'Group 1-S' – assessed as per ISO 5660 cited in 'Protection From Fire' Clause C of the NZBC. This enables Invibe™ panel to be used in the broadest range of fire exit ways in commercial and residential building applications.

### Resistant to damage from moisture and steam

Can be used in wet area applications, including enclosed shower areas. The ChromaShield™ 200 series coating provides a impervious surface barrier to moisture, and the James Hardie cement-composite substrate is a homogenous material that is resistant to damage from moisture.

### Fast and easy installation

Can be direct-fixed to either timber or light gauge steel frames at 600mm max centres, saving time and money. Invibe™ panel can be silicone butt-jointed or installed with the ARChitectural™ range of aluminium mouldings to create a variety of different looks.

### A healthy product for living

Invibe™ panel is made from raw materials low in toxicity, including cellulose fibre (unbleached cellulose from sustainable plantation timbers), Portland cement, ground sand, water and additives. Both substrate and coating contain no VOC's (volatile organic compounds).

### Warranty

Invibe™ panel comes with a 15 year product warranty.

A 'double shield'  
of durability.

\* Key benefits apply when the product is installed and maintained correctly and to the extent set out in James Hardie's published literature current at the time of installation. For more information about performance, installation, warranties and warnings go to [www.jameshardie.co.nz](http://www.jameshardie.co.nz)



INraw<sup>TM</sup>  
panel

101

Natural  
**ChromaShield**





INraw<sup>TM</sup>  
panel

101

Natural  
ChromaShield<sup>®</sup>





---

# ARChitectural™ Inraw™ Panel

Featuring ChromaShield™ Technology 100 Series Coating

---

ARChitectural™ Inraw™ panel is an internal pre-finished panel characterised by a natural raw concrete aesthetic.

Inraw™ panel's core DNA is durability, because it's made from James Hardie 6mm thick cement composite substrate that's coated using ChromaShield™ 100 series.

Inraw™ panel offers a 'double shield' of durability in a vast range of commercial and residential interior dry and semi-wet area applications.

---

<b>Sheet size</b>	2700 x 1200mm
<b>Thickness</b>	6mm
<b>Finish</b>	Gloss or Satin
<b>Application</b>	Commercial and residential interior wall in dry and semi-wet areas.

---

## Key Benefits\*

---

### Natural aesthetic

The natural aesthetic of raw concrete in a satin or gloss finish. Like a piece of marble panel, each Inraw™ panel has its own unique characteristics, with slight variations in shade, tone and pattern.

### Design integrity

Design integrity is maintained over time due to a high level of performance. It's resistant to fading, yellowing, peeling and flaking. It also provides good resistance to abrasion, wear and light surface scratching.

### Low maintenance

Low maintenance and easy to clean. Resistant to general stains, bacteria and mould.

### Dimensional stability

It's resistant to cracking, warping and swelling due to the robust nature of the James Hardie cement composite substrate.

### Fire resistance

Made from a non-combustible substrate and achieves the best possible fire hazard properties classification of 'Group 1-S' – assessed as per ISO 5660 cited in 'Protection From Fire' Clause C of the NZBC. This enables Inraw™ panel to be used in the broadest range of fire exit ways in commercial and residential building applications.

### Fast and easy installation

Can be direct-fixed to either timber or light gauge steel frames at 600mm max centres, saving time and money. Inraw™ panel can be silicone butt-jointed or installed with the ARChitectural™ range of aluminium mouldings to create a variety of different looks.

### A healthy product for living

Inraw™ panel is made from raw materials low in toxicity, including cellulose fibre (unbleached cellulose from sustainable plantation timbers), Portland cement, ground sand, water and additives. Both substrate and coating contain no VOC's (volatile organic compounds).

### Warranty

Inraw™ panel comes with a 10 year product warranty.

Characterised  
by a natural raw  
concrete aesthetic.

\* Key benefits apply when the product is installed and maintained correctly and to the extent set out in James Hardie's published literature current at the time of installation. For more information about performance, installation, warranties and warnings go to [www.jameshardie.co.nz](http://www.jameshardie.co.nz)



A range of anodised aluminium extrusions for interior use to create joints, corners and finishing details.

---

## Interior Jointers

---

### 6mm Aluminium Negative Jointer

A natural anodised aluminium extrusion used to join Invibe™ and Inraw™ panels in dry area applications, creating an expressed-joint look.

**Product code**  
305752  
**Length**  
2700mm



### 6mm Aluminium End Cap

A natural anodised aluminium extrusion, used to finish the edges of Invibe™ and Inraw™ panel in dry area applications.

**Product code**  
304500  
**Length**  
2700mm



### 6mm Aluminium External Corner

A natural anodised aluminium extrusion, used to create external corners with Invibe™ and Inraw™ panel. This extrusion is suitable for use in both wet and dry area applications. (Note: Inraw™ panel is suitable for use in dry area applications only).

**Product code**  
304502  
**Length**  
2700mm



### 6mm Aluminium Internal Corner

A natural anodised aluminium extrusion, used to create internal corners with Invibe™ and Inraw™ panel. This extrusion is suitable for use in both wet and dry area applications. (Note: Inraw™ panel is suitable for use in dry area applications only).

**Product code**  
304504  
**Length**  
2700mm



### 6mm Aluminium Wet Area Jointer

A natural anodised aluminium extrusion used to join Invibe™ panels in wet area applications.

**Product code**  
304506  
**Length**  
2700mm



### 6mm Aluminium Dry Area Jointer

A natural anodised aluminium extrusion used to join Invibe™ and Inraw™ panels in dry area applications.

**Product code**  
305680  
**Length**  
2700mm



# ARCHITECTURAL™

Ask James Hardie™  
Call 0800 808 868  
[jameshardie.co.nz](http://jameshardie.co.nz)



© 2018 James Hardie New Zealand. TM and ® denote a trademark or registered mark owned by James Hardie Technology Limited.

For more information about performance, installation, warranties and warnings: [jameshardie.co.nz](http://jameshardie.co.nz)