

# Look Book

**Transform imagination  
into inspiration**





# Contents

## EXTERIORS

Linea™ Weatherboard	8
Oblique™ Weatherboard	18
Stria™ Cladding	28
Axon™ Panel	40
EasyLap™ Panel	46
Board and Batten	50

## EAVES & SOFFITS

Hardie™ Flex Eaves Lining	57
Villaboard™ Lining	58
Hardie™ Groove Lining	59

## INTERIORS

Hardie™ Groove Lining	60
Bringing The Outside In	68





# Inspiration from the outside in

It's Possible™.



We believe that home is a sanctuary and a canvas for self-expression without compromise. James Hardie empowers homeowners and building professionals alike to achieve their dream home with quality solutions that enable endless possibilities for design and aesthetics, while also delivering trusted protection and long-lasting beauty.

We all have a dream for our home, and with James Hardie, It's Possible™.



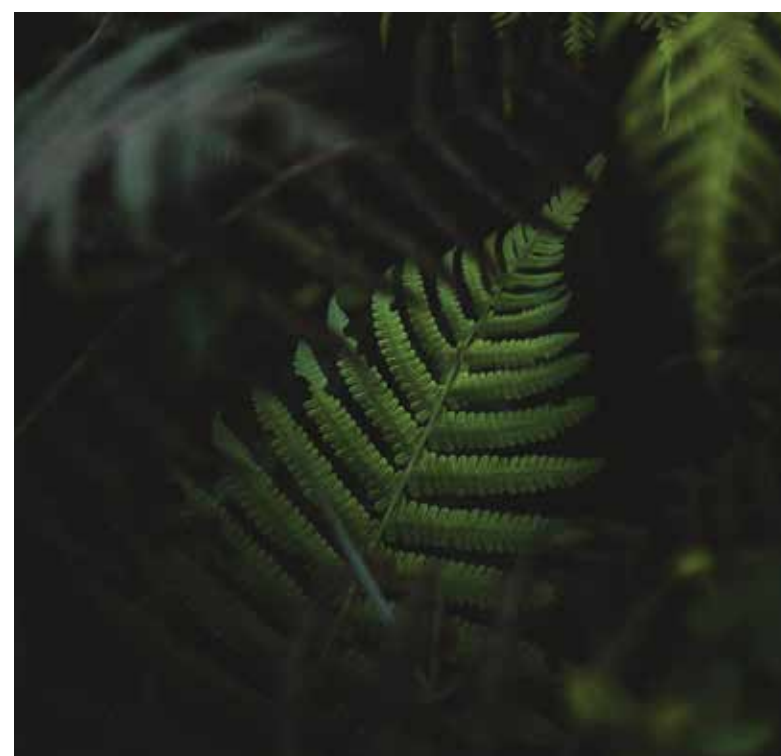


## DESIGN FLEXIBILITY

Not only do you have a wide variety of products to select from, you can also mix and match them. Combining vertical and horizontal cladding, and using different widths, can create contrast and add interest to your home. Then to really add the personal touch, you can paint it in a variety of colours – from traditional white painted weatherboard to darker, more contemporary shades.

## LOW MAINTENANCE

Hardie™ cladding is resistant to cracking and warping so holds paint well, extending the time before repainting. With minimal maintenance such as periodic wash downs and repainting in accordance with paint manufacturer guidelines, you can keep your home looking great for many years to come. It's also fire resistant, rot resistant and resistant to moisture damage\*.



## SUSTAINABLE

Our products are manufactured with a focus on reducing their environmental impact, using sustainable and low toxicity products with minimal volatile organic compounds (VOCs). We have continued to invest heavily in the development and design of fibre cement products that are durable and low maintenance.



# Linea™ Weatherboard

Whether you're drawn to the classic Kiwi villa, or like a more contemporary and distinctive look, Linea™ Weatherboard is ready to answer your design brief. Made to withstand our harsh and unpredictable climate, Linea™ Weatherboard is both tough and beautiful.







### 150mm WIDE

Ideal for smaller homes, this width ensures you get the accentuated design shadows you're after within the space.



### 180mm WIDE

Larger walls suit the larger board size, giving you stylish, deep shadow lines and impressive external feature walls.

#### DESIGN TIP

Painting your Linea™ Weatherboard dark to match the joinery creates a dramatic modern look with traditional horizontal lines.



It's Possible™.



# Reflect your style



Think of Linea™ Weatherboard as a blank canvas waiting ready for your own design and style to be applied. It can be painted a large variety of colours, from the classic white of a traditional villa, to a darker, more modern shade to match a contemporary design.



# Classic

Light, airy and elevated, the lines of Linea™ Weatherboard help accentuate key features. Create the ultimate family home and open up new possibilities for living and entertaining – then sit back, relax and enjoy the summer breeze.







Linea™ Weatherboard

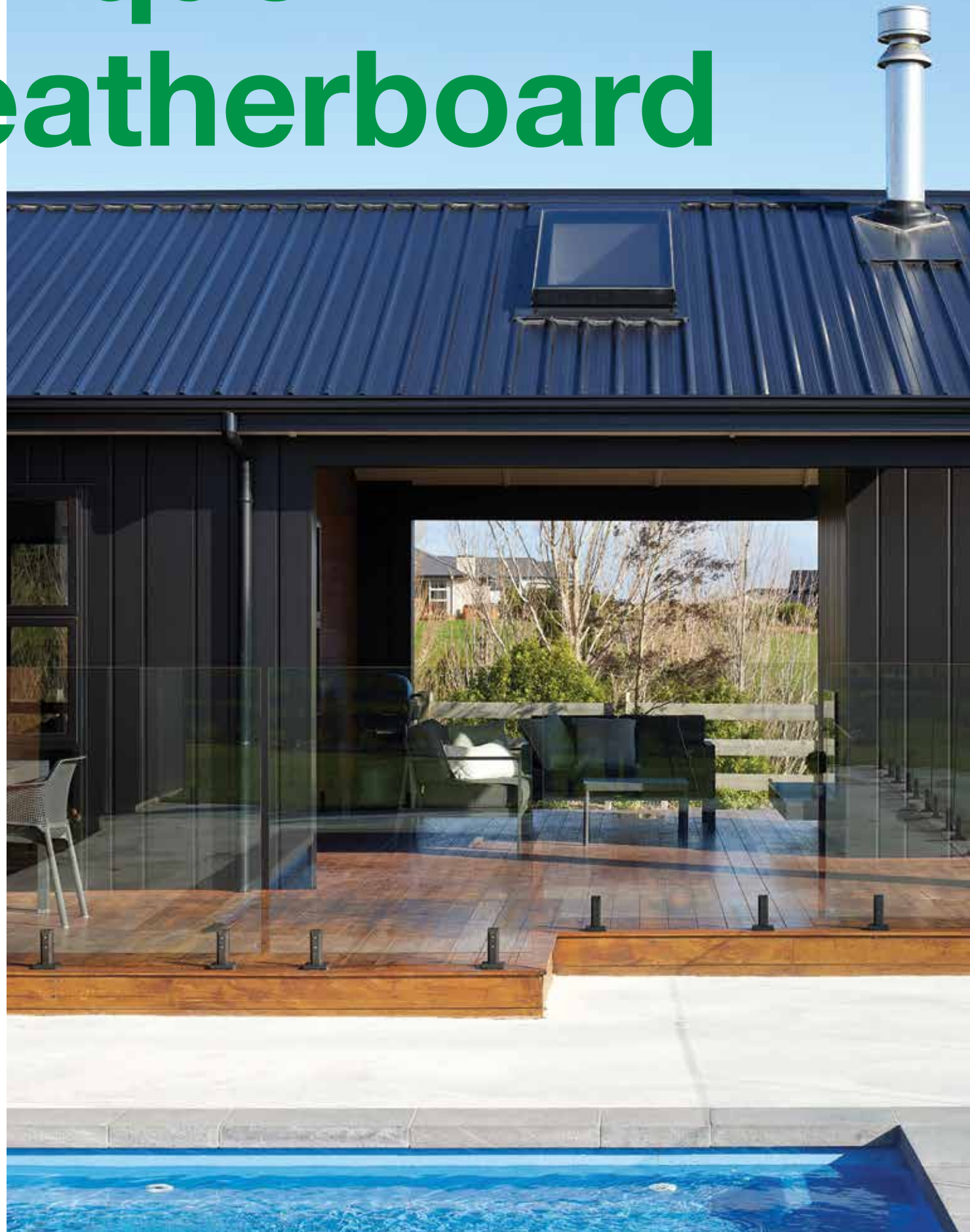


It's Possible™.



# Oblique™ Weatherboard

It's Possible™.



Embrace design diversity with Oblique™ Weatherboard. It can be installed both vertically and horizontally, allowing you to create a truly unique home! The modern, rusticated profile can be painted in a large variety of colours to match your own personal style.







### 200mm WIDE

This captures that timeless, classic charm with the added bonus of low maintenance. And it's an ideal way to make smaller wall spaces look larger.



### 300mm WIDE

For a modern twist on a classic profile. Ideal for larger walls, it creates a look that's confident and contemporary.

#### DESIGN TIP

Combining 200 and 300mm widths of Oblique™ Weatherboard creates an architectural look that's distinctive, modern and unique.

It's Possible™.





Oblique™ Weatherboard



Oblique™ Weatherboard





Oblique™ Weatherboard



It's Possible™.



# Textural

## DESIGN TIP

Vertical lines can be an important architectural detail, making roof heights appear more elevated or bringing variety and textural interest.





# Stria™ Cladding

The wider format of Stria™ Cladding helps your home look distinctive and modern, instantly transforming home designs into an extension of your own personal style. Stria™ Cladding has distinctive deep grooved lines and can be laid horizontally or vertically.



It's Possible™.



# What fits your style?

It's Possible™.

## 325mm WIDE

The narrower lines of the 325mm profile establish a look of modern simplicity and are a great way to make smaller walls appear larger.



## 405mm WIDE

The modern architectural style of the 405mm panel brings a bold statement to any design. The perfect solution for large scale walls.





# Contemporary

To clad for the long run, pick Stria™ Cladding for any surface, knowing you'll get to enjoy simple, modern and stylish walls that'll stand the test of time.





# Urban Living



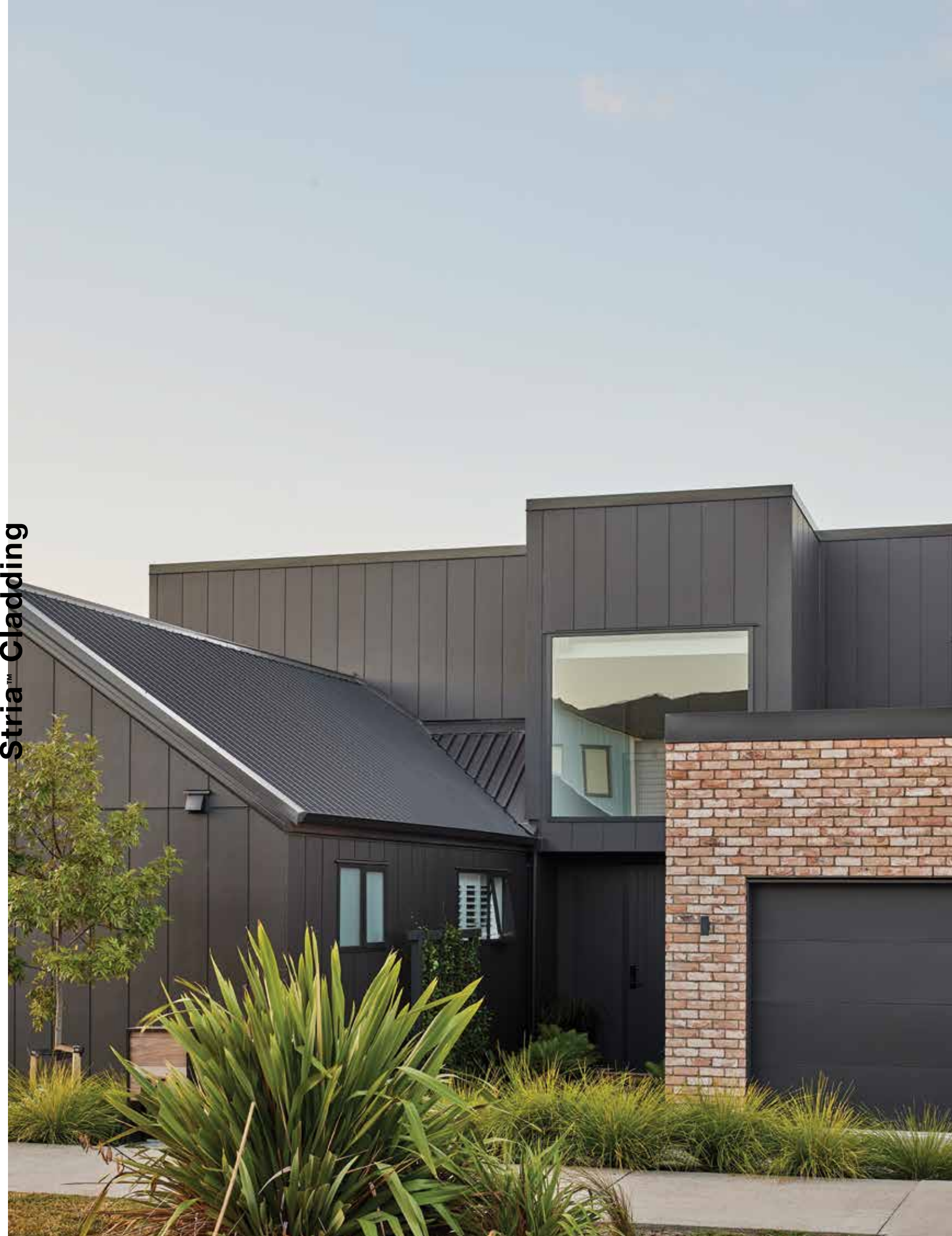
**DESIGN TIP**

Mixed application. Stria™ Cladding really comes into its own when you mix the different styles, install them vertically and horizontally and vary the colour.





Stria™ Cladding



It's Possible™.





Stria™ Cladding

Stria™ Cladding



# Axon™ Panel



It's Possible™.

The vertically grooved finish of Axon™ Panel are a design highlight for any modern family home or city apartment. It's also a clever alternative to the traditional board and batten look. With a choice of textures and widths, Axon™ Panel lets you put your own stamp on your new home.





# Your Options

## 400mm SMOOTH

Got a bigger area to clad? With its subtle joins, this larger format panel is perfect for larger walls and surfaces, creating an almost geometric feel to your exterior.



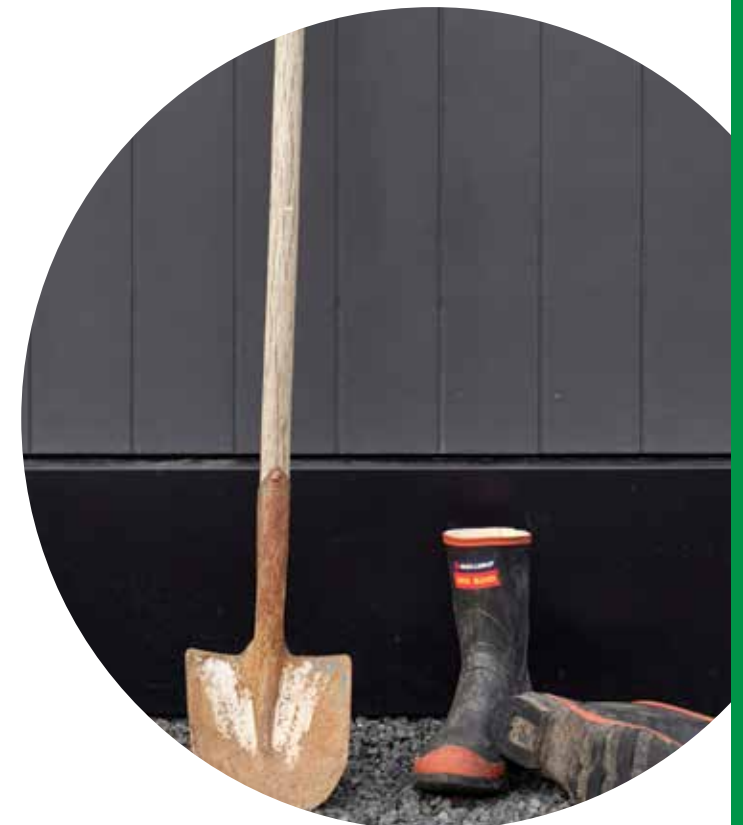
## 133mm GRAINED

Axon™ Panel's grainy, wood-like texture contrasts with a smooth flooring surface and can help bring a softer touch to your modern outdoor space.



## 133mm SMOOTH

The vertical lines of Axon™ Panel with its smooth texture help create a clean and distinctive design look.



It's Possible™.



# Bold

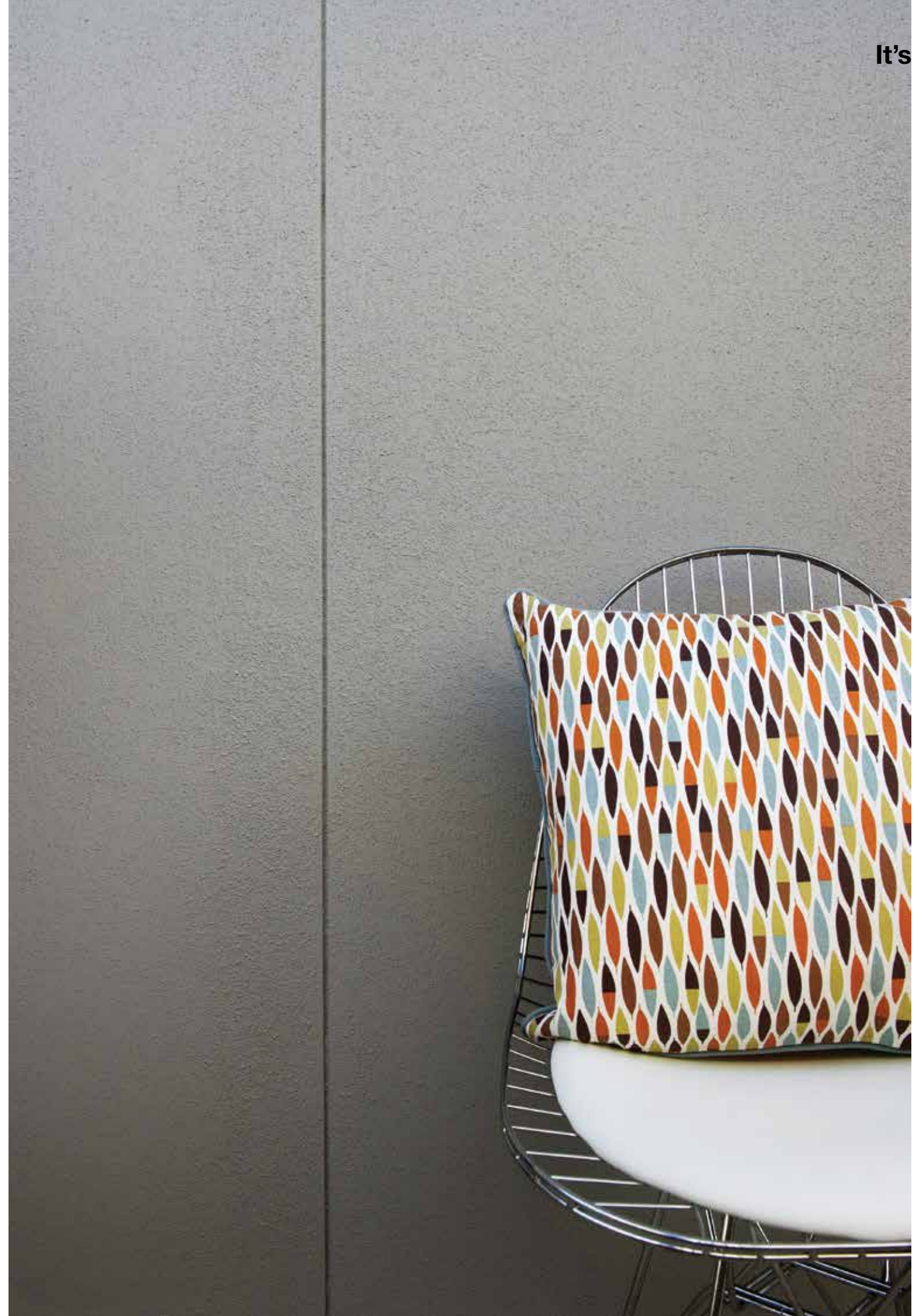
Be bold in your design with dramatic, vertical Axon™ Panel painted dark. Or add a more personalised touch by introducing contrasting cladding to create a truly unique mix-material home.





# EasyLap™ Panel

If you're looking for a down to earth, impressive looking exterior, our EasyLap™ Panel is just what you're after. It creates a clean look that can be painted smooth or textured for that rendered look. With EasyLap™ Panel, it couldn't be easier.



It's Possible™.





#### DESIGN TIP

The texture of grained Axon™ Panel with a dark finish offsets the EasyLap™ Panels used on the ground floor. These have been rendered to achieve a concrete slab designer-look.



# Board & Batten



It's Possible™.

Bring texture and depth to your walls with a vertical board and batten application. EasyLap™ Panel and Hardie™ Flex Sheet are the perfect surface for our Hardie™ Axent™ Trims, creating a truly modern look with design impact.





# Modern Barn

It's Possible™.

Create your own retreat with a modern twist on the rustic barn. A simple barn-inspired form combined with vertical board and batten, painted dark.





# Timeless



To achieve a timeless, durable home use EasyLap™ Panel and Hardie™ Axent™ Trims, painted white they create a modern farmhouse design.



# Eaves & Soffits



Get ready to celebrate your love for the great outdoors by creating stylish outdoor spaces that are protected from the sun and rain.

## Hardie™ Flex Eaves Lining

The smooth flat sheets of Hardie™ Flex Eaves Lining are the perfect width for eaves lining. The ideal way to keep it simple while making it look great!

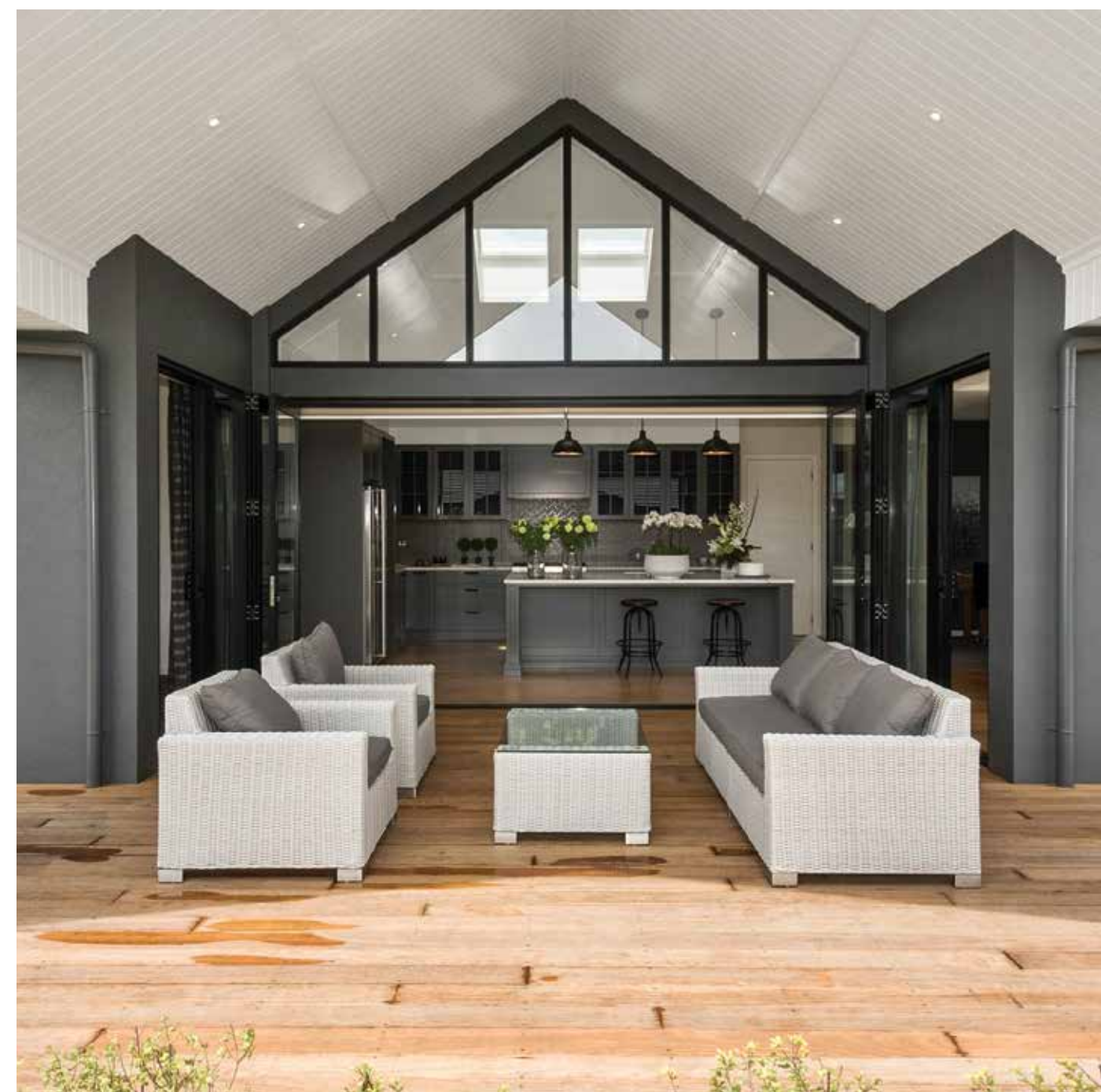






# Hardie™ Groove Lining

The grooves are perfect for enhancing design lines for modern builds, and are equally at home on villa and bungalow renovations. Hardie™ Groove Lining is particularly well suited to larger sized eaves, verandahs, porches and carports.



# Villaboard™ Lining

With seamless stopped joints and negative details, Villaboard™ Lining brings a smooth plastered look to your design.



# Hardie™ Groove Lining

Hardie™ Groove Lining lets you add a unique tongue and groove look to your walls and ceilings. Made of tough fibre cement board, it adds durability as well as timeless charm. It also retains its good looks year after year, even in the most demanding conditions such as laundries and parts of the bathroom.







### DESIGN TIP

Create a beautiful cathedral style ceiling in your home with Hardie™ Groove Lining. Paint in white or neutral tones to maintain the grandeur of space.





Hardie™ Groove Lining



Hardie™ Groove Lining



# Striking



Mix up your choice of colour for a modern twist on the cathedral ceiling. Hardie™ Groove Lining painted a bold dark colour contrasts well with the white walls.



# Bringing the outside in

Who says you can't bring the versatile looks you already love outside, indoors? Make a statement with a feature wall and experiment with textures and angles, in any colour you fancy.







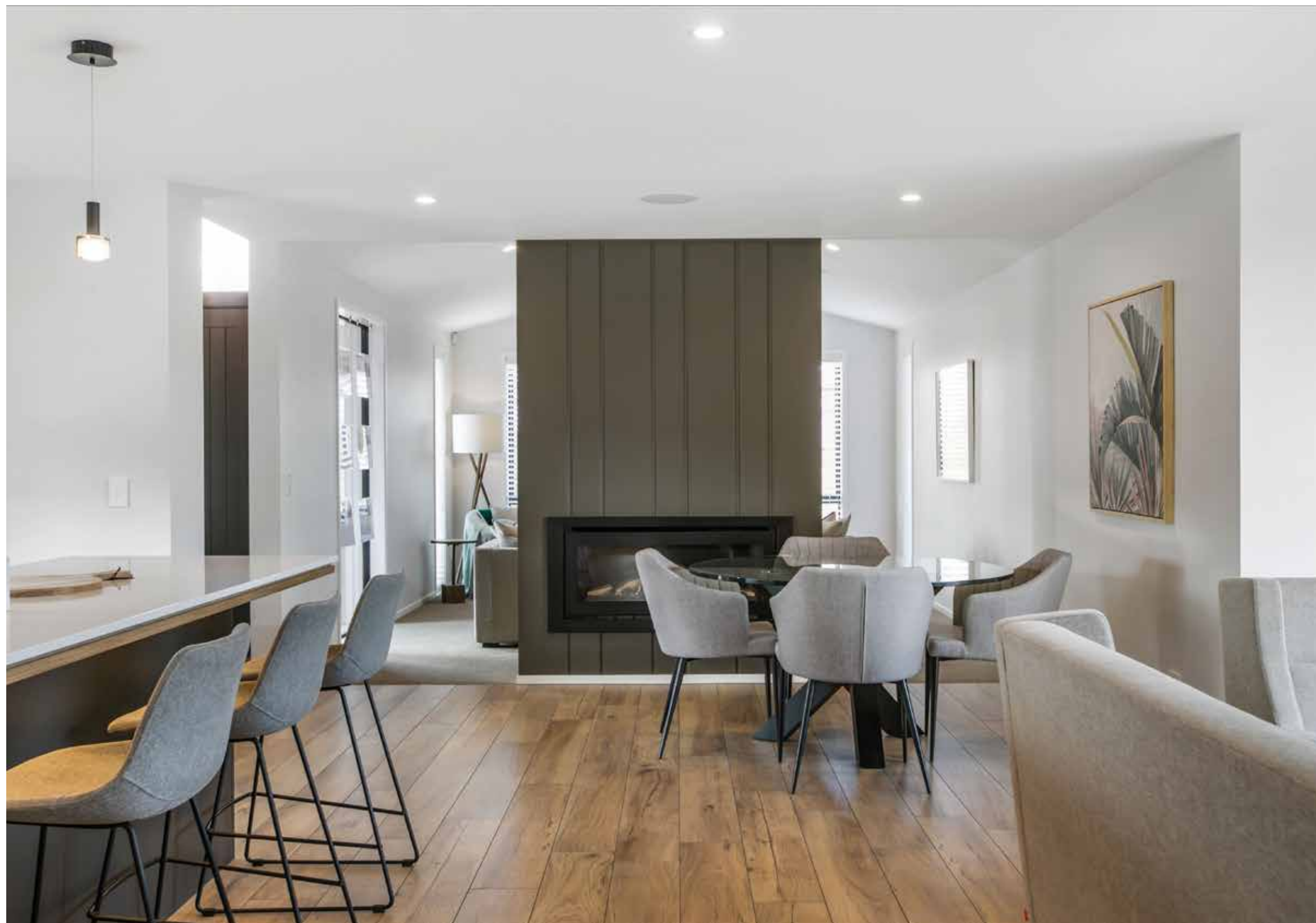
#### DESIGN TIP

Bring depth and texture to your bedroom wall with Oblique™ Weatherboard, painted in a bold colour for maximum impact.



### DESIGN TIP

Choose Oblique™ Weatherboard to create an eye catching, modern fire place feature in your living area.





# Love the look?

Now you've had a good read through The Look Book, we hope you've found a look that you love! To find out more about the Hardie™ fibre cement products that have caught your eye, just head to our website, Instagram or Pinterest pages. You'll find more information and design inspiration to help you create your dream home.

**[jameshardie.co.nz](https://jameshardie.co.nz)**



\*For more information, warnings and warranties please see our website and review the relevant installation and technical guides. James Hardie Durability. When installed and maintained correctly in accordance with James Hardie's literature, current at the time of installation, products by James Hardie are resistant to fire, rot resistant and resistant to moisture damage.





With our exterior  
cladding solutions.  
**It's Possible™.**

[jameshardie.co.nz](https://jameshardie.co.nz)



For more information, warnings and warranties please see our website and review the relevant installation and technical guides. ©2023 James Hardie New Zealand Limited. ™ and ® denotes a trademark and registered mark owned by James Hardie Technology Ltd.

