



THE CASE STUDY

PROJECT DETAILS

Location
Auckland, New Zealand

Project Type
Residential

Architectural Designer
Akash Narayan at Nara Group

Builder
Claude Xie at Indelible Homes
www.indeliblehomes.co.nz

FEATURED PRODUCTS

- Stria™ Cladding
- Hardie™ Groove Lining

This bold contemporary home blends low-maintenance convenience with architectural sophistication, proving that modern aesthetics and practicality can coexist beautifully.

PROJECT OVERVIEW

Located in Tuscany Estates in south-east Auckland, this stylish residential build demonstrates how thoughtful material selection helps to create a home that's both visually striking and easy to maintain.

For this project, the architect and builder/developer both knew that selecting the right cladding and interior lining materials was crucial to achieving both the aesthetic vision and the performance requirements. The home needed to withstand Auckland's

unpredictable weather patterns – from sub-tropical cyclones to intense UV exposure – while maintaining its attractive appearance for years to come.

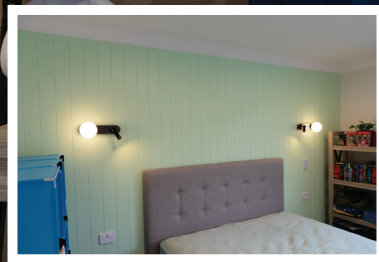
The Hardie™ fibre cement products chosen for this project were Stria™ Cladding for the exterior and Hardie™ Groove Lining for selected interior spaces. These products were chosen for their design flexibility, quick installation time and technical performance in New Zealand conditions.

"We chose Stria™ Cladding for the exterior because it delivers a bold, architectural look that aligns perfectly with current housing design trends in New Zealand," explains Claude Xie, managing director of Indelible Homes. "The interlocking 25mm shiplap joint creates pronounced horizontal shadow lines that give the facade texture and visual depth. This adds a premium design feel, while still being practical and functional."

The project team particularly valued the BRANZ Appraisal that comes with Stria™ Cladding, providing assurance of compliance and performance in areas exposed to strong winds and salt-laden air. The lightweight panels are easy to cut and

HARDIE™ GROOVE LINING

Hardie™ Groove Lining offers the classic look of tongue-and-groove timber with the durability of fibre cement. Its 2.5mm deep vertical grooves create a classic look that's perfect for interior feature walls, ceilings, and externally on eaves and soffits.



STRIA™ CLADDING

Stria™ Cladding features 15mm wide grooves that create strong shadow lines. They can be installed horizontally or vertically, giving a distinctive look to your home design.

fix, with an intuitive system that reduces installation time and labour costs – factors that directly contributed to keeping this project on schedule.

For interior spaces, especially those prone to moisture like semi-wet areas in bathrooms and kitchens, Hardie™ Groove Lining offered the ideal solution.

“Hardie™ Groove Lining was selected for its unique ability to blend timeless style with practical performance. It mimics the classic tongue-and-groove timber aesthetic, but because it's made from fibre cement, it outperforms timber in high-moisture environments.”

The impact and fire resistance of Hardie™ Groove Lining added an extra layer of safety, while its smooth, paint-ready surface allowed for a refined interior finish that complements the exterior aesthetics.

Claude reports that easy access to James Hardie's comprehensive technical documentation significantly streamlined the build process.

“The clarity and comprehensiveness of James Hardie's technical documentation are standout features. Whether it's product specifications, BRANZ Appraised systems or installation guidelines, the information is well-structured and aligned with the New Zealand Building Code. This makes it easier for our team to ensure compliance during the consent process, avoiding potential delays.”

Time-efficient installation and finishing were other factors in the project's success. Many of James Hardie's products come pre-primed, reducing

painting time on site, while their dimensional accuracy minimises the need for adjustments during installation. Because the products remain stable under various weather conditions, there were fewer disruptions caused by swelling, warping or moisture-related issues – a significant advantage in Auckland's humid climate.

The owners of this beautiful home are pleased to have Hardie™ fibre cement products, inside and out. They get the best of both worlds – an impressive looking home, and the time and cost-saving benefits of low-maintenance materials. They're also comforted by the fire-resistant properties of fibre cement, especially in bush-adjacent or high-risk areas. Overall, Hardie™ fibre cement products help the homeowners to feel confident in their investment, both from a safety and design perspective.

“James Hardie's products are widely respected across New Zealand's construction industry for their proven durability, fire resistance and consistent performance in a range of environmental conditions. Hardie™ fibre cement delivers on low maintenance, rot resistance and resistance to moisture damage – making their products particularly well-suited to New Zealand homes.”